

REMOTE CONTROL

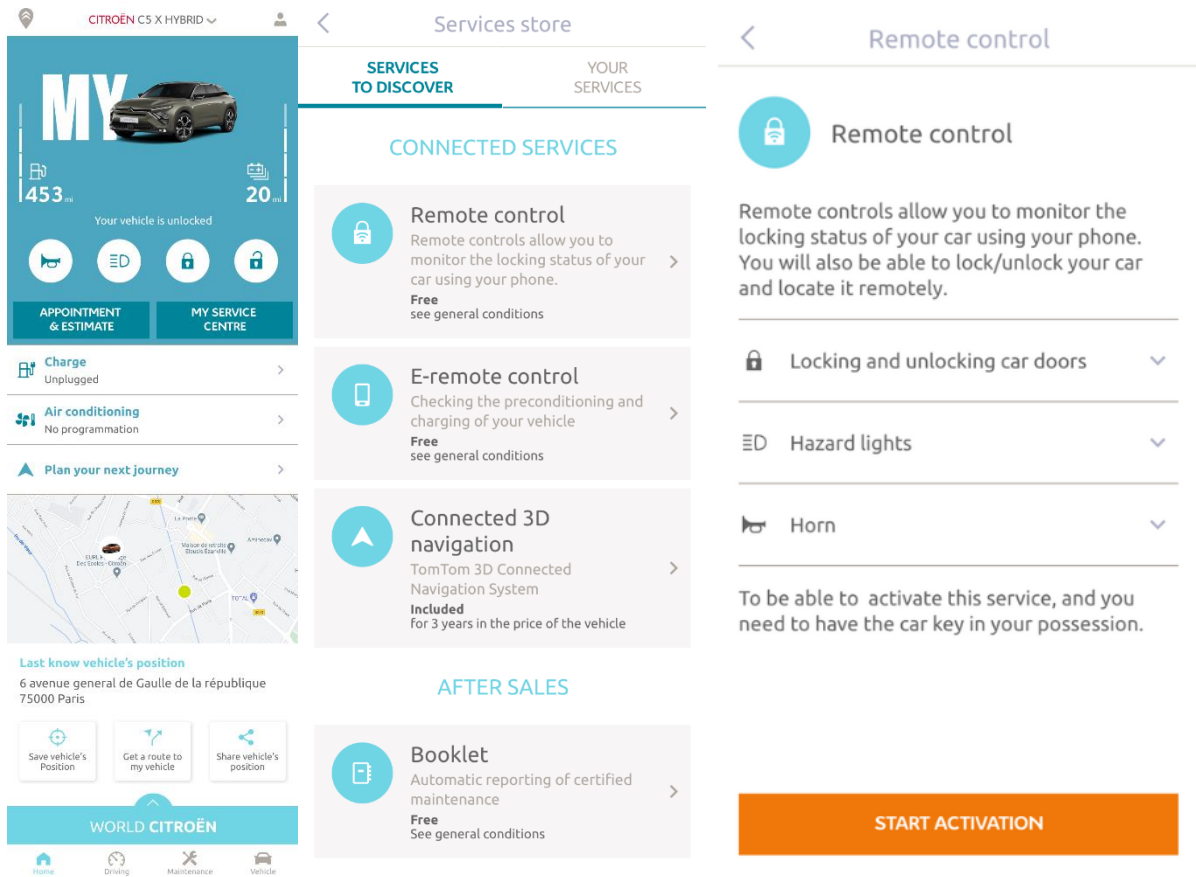
SUBSCRIPTION/ ASSOCIATION / ACTIVATION AND USAGE

This user guide will explain the path that you need to follow to activate Remote Control for your car using your mobile device.

A MyCitröen account paired with your vehicle is required to use Remote Control. If you haven't yet installed the mobile app on your smartphone, you can easily do it by downloading the app from Google Play Store or App Store.



Open the app MyCitröen, visit the Services store section and select “Discover” to activate Remote Control. Then, tap on “START ACTIVATION” and follow the few steps to activate your new service.



You will be redirected to the Service Activation page, where you can further understand the Remote Control service and its benefits. Scroll down and tap on the “GET” button to continue activating the service.

Please read and accept the General Terms and Conditions, click save after which you can start the activation process through the Mobile App, by tapping on “CONTINUE TO MYCITROËN”.

The 3 steps that you then need to follow only take a few minutes to complete your Remote Control service.

Confirm that you have read and accepted the terms and condition, then start the activation.

My Citroën account certification process

To be able to control your vehicle remotely from your smartphone, you must complete this ten-minutes path in three steps.

You can stop it at any time and resume later.



Define a trusted phone number



Set a My Citroën safety code




Secured bluetooth connection
(To do in the vehicle)

I agree to the terms and conditions of use

START

1. Enter your phone number and enter the code that you received via SMS

Close Trusted phone number < Trusted phone number < Trusted phone number



Define a trusted phone number

This telephone number will allow us to identify you in a secure way. It will be useful to ask you for confirmation of any secured operation.

Enter your trusted telephone number.

Country

Phone number

We have send you a 6-digit code by SMS. Please fill it in here to confirm your trusted phone number.

Received code

[Re-send me the code](#)


START CONTINUE CONTINUE

< Trusted phone number Close Trusted phone number

We have send you a 6-digit code by SMS. Please fill it in here to confirm your trusted phone number.

Received code

[Re-send me the code](#)



Your trusted phone number is defined!

CONTINUE

1	2 ABC	3 DEF
4 GHI	5 JKL	6 MNO
7 PQRS	8 TUV	9 WXYZ
0		⌫

CONTINUE

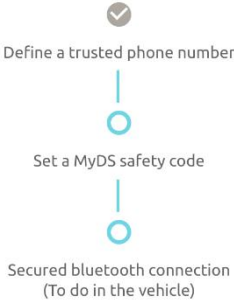
2. Create your personal 4-digit Safety Code. You will receive a temporary code via SMS. Enter this code it to register your phone and then create your Safety Code. This code will allow you to secure access your vehicle remotely and allow you to use the Remote Control features.

MyCitröen account certification Close MyCitröen safety code

MyCitröen account certification process

To be able to control your vehicle remotely from your smartphone, you must complete this ten-minutes path in three steps.

You can stop it at any time and resume later.



Define a trusted phone number

Set a MyDS safety code

Secured bluetooth connection (To do in the vehicle)

START **START** CONTINUE

MyCitröen safety code

We have send you a 9-digit code by SMS. You need to fill it to then set your safety code.

Received code

[Re-send me the code](#)

MyCitröen safety code

We have send you a 9-digit code by SMS. You need to fill it to then set your safety code.

Received code
1234 ✓

[Re-send me the code](#)

Define a 4-digit safety code to interact with your car from your smartphone.

Set the safety code

Confirm

CONTINUE

MyCitröen safety code

1234 ✓

[Re-send me the code](#)


Define a 4-digit safety code to interact with your car from your smartphone.

Set the safety code
1234 ✓

Confirm
1234 ✓

CONTINUE

MyCitröen safety code



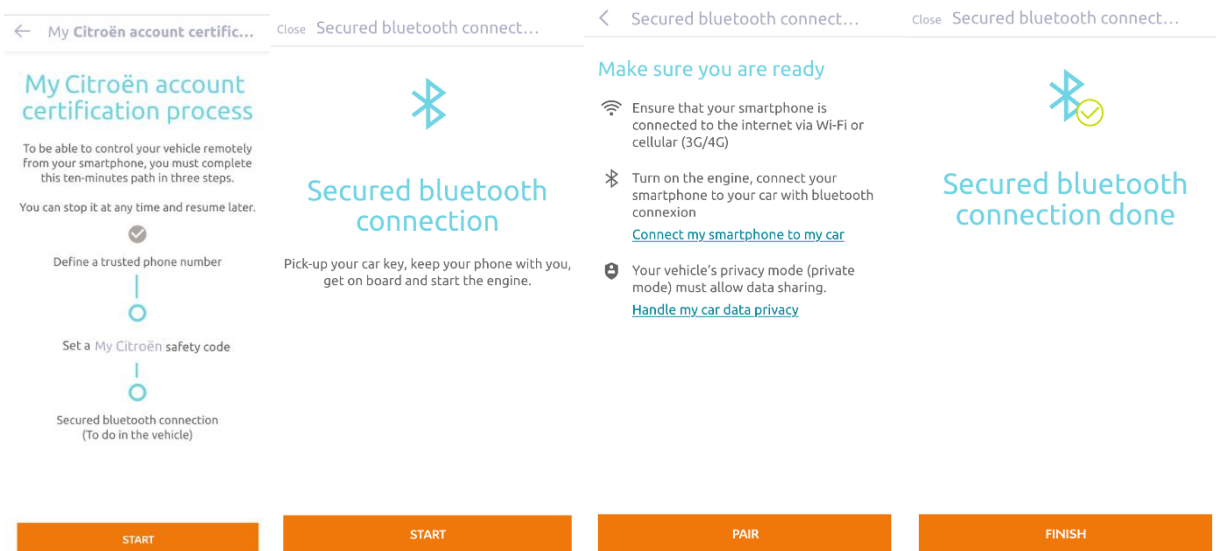
MyCitröen safety code set

CONTINUE

+	1	2	3	%
-	4	5	6	⌋
*	7	8	9	✕
/	0	=	.	🔍
ABC	,	@?#		

+	1	2	3	%
-	4	5	6	⌋
*	7	8	9	✕
/	0	=	.	🔍
ABC	,	@?#		

- Connect your mobile phone to your vehicle using the Bluetooth. Enter your vehicle, turn on the engine, then turn on the Bluetooth on your mobile phone, and click on "PAIR" to start the pairing process.






Your Remote Control service should now be active: you may be asked to update your vehicle equipment software to full enjoy all the features and manage your car remotely.

HOW TO USE YOUR REMOTE CONTROL:

Once you have activated Remote Control for your vehicle, you can control the locking status of your car, lock and unlock the doors or turn on the light and the horn in few simple steps.

To remotely control your car, you simply need to open the MyCitroën app, select the icon of the command that you would like to send to your vehicle, confirm the action and wait few seconds. Remember that each 7 days you need to confirm the remote commands using your safety code.

MY  MY  MY 

453 mi 20 mi 453 mi 20 mi 453 mi 20 mi

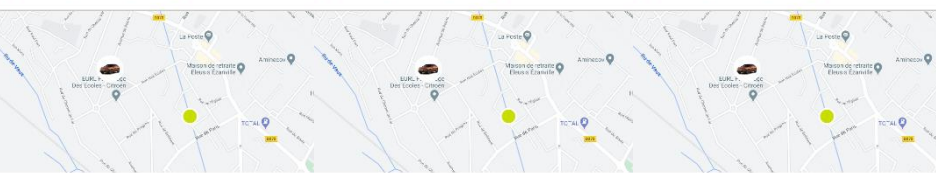
Your vehicle is unlocked Your vehicle is unlocked Your vehicle is locked

APPOINTMENT & ESTIMATE MY SERVICE CENTRE

Charge Unplugged > Charge Unplugged > Charge Unplugged >

Air conditioning No programmation > Air conditioning No programmation > Air conditioning No programmation >

Plan your next journey > Plan your next journey > Plan your next journey >



Last know vehicle's position
6 avenue general de Gaulle de la république
75000 Paris

Save vehicle's Position Get a route to my vehicle Share vehicle's position